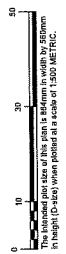


REFERENCE PLAN OF COVENANT OVER PART OF
 LOTS 46 TO 54 AND 57 TO 68, ALL OF DL 579, SDYD,
 PLAN EPP118790

PURSUANT TO SECTION 89(1)(g) OF THE LAND TITLE ACT
 BCSS 62E.073
 SCALE 1:500 METRIC



The indicated plot size of this plan is 186mm in width by 250mm in height (0.86m x 1.25m) printed at a scale of 1:500 METRIC.

- LEGEND**
- Boundary Measurement Point
 - Decade Standard Iron Nail Found
 - Decade Standard Iron Nail Set
 - Decade Witness
 - Decade Witness

This plan shows size of most witness points which are set out on the line corners.

Distances shown are horizontal ground-level distances, in metres and decimetre fractions.

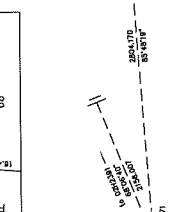
Integrated Survey Area No. 4, City of Kelowna, MA03102(RS)

Grid bearings are derived from GNSS observations to geodetic control monuments 0202371 and 0202351 and are referred to the spatial reference system of UTM Zone 11.

The UTM coordinates and unimproved boundary measurements are as shown on the plan. The UTM coordinates and unimproved boundary measurements are as shown on the plan. The UTM coordinates and unimproved boundary measurements are as shown on the plan.

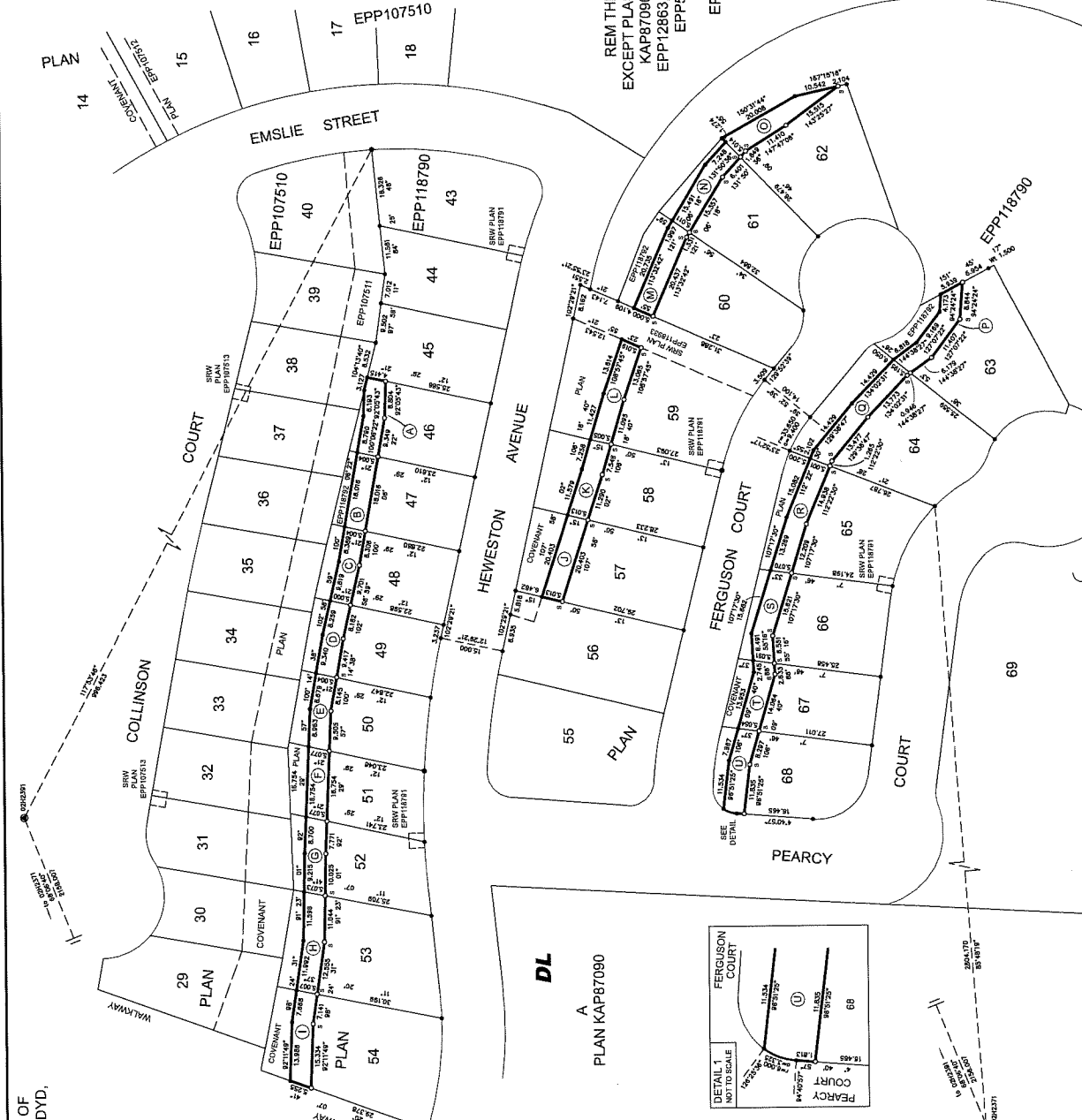
This plan shows horizontal ground-level distances where otherwise specified. To compute grid distances, multiply ground-level distances by the average combined factor of 0.999941, which has been derived from geodetic control monument 0202351.

ROD OF REFERENCE	Area	Area
X	LOT 46, DL 579, SDYD, PLAN EPP118790	86.7 m ²
Y	LOT 47, DL 579, SDYD, PLAN EPP118790	90.1 m ²
Z	LOT 48, DL 579, SDYD, PLAN EPP118790	88.0 m ²
AA	LOT 49, DL 579, SDYD, PLAN EPP118790	89.2 m ²
AB	LOT 50, DL 579, SDYD, PLAN EPP118790	83.2 m ²
AC	LOT 51, DL 579, SDYD, PLAN EPP118790	83.2 m ²
AD	LOT 52, DL 579, SDYD, PLAN EPP118790	114.9 m ²
AE	LOT 53, DL 579, SDYD, PLAN EPP118790	102.0 m ²
AF	LOT 54, DL 579, SDYD, PLAN EPP118790	124.0 m ²
AG	LOT 57, DL 579, SDYD, PLAN EPP118790	111.2 m ²
AH	LOT 58, DL 579, SDYD, PLAN EPP118790	102.0 m ²
AI	LOT 59, DL 579, SDYD, PLAN EPP118790	111.2 m ²
AJ	LOT 60, DL 579, SDYD, PLAN EPP118790	102.0 m ²
AK	LOT 61, DL 579, SDYD, PLAN EPP118790	102.0 m ²
AL	LOT 62, DL 579, SDYD, PLAN EPP118790	102.0 m ²
AM	LOT 63, DL 579, SDYD, PLAN EPP118790	102.0 m ²
AN	LOT 64, DL 579, SDYD, PLAN EPP118790	102.0 m ²
AO	LOT 65, DL 579, SDYD, PLAN EPP118790	102.0 m ²
AP	LOT 66, DL 579, SDYD, PLAN EPP118790	102.0 m ²
AQ	LOT 67, DL 579, SDYD, PLAN EPP118790	102.0 m ²
AR	LOT 68, DL 579, SDYD, PLAN EPP118790	102.0 m ²



WAB51025851	UAB061	UTM ZONE 11 COORDINATES
Point	Neuring	Easting
02-02371	5218889.928	318341.899
02-02351	5218874.272	321344.123
		0.01

AITerra
 www.aiterra.com
 481-253-3232



This plan was within the Regional District of Central Okanagan.
 The field survey represented by this plan was completed on the 14th day of March, 2022.
 Simon Prochaska, BCUS 8981

579

REM THE SOUTH 1/2 DISTRICT LOT 579
 EXCEPT PLANS KAP77336, KAP86178, KAP86917,
 KAP87090, KAP87918, EPP9619, EPP9638,
 EPP15721, EPP18670, EPP22118,
 EPP55798, EPP45189, EPP72926,
 EPP74481, EPP77194
 EPP107510 AND EPP118790